

# USB Memory Phone

## User Manual



Free calls over Internet    Caller ID and auto run function

## 1 Instruction

### 1.1 Summary

USB Memory Phone is a USB Phone embedded with 128M memory drive. Once you plug it into your computer's USB port, the softphone stored in memory drive will auto run without any additional installation, login in the account stored automatically, then you can make VoIP calls by phone keypads, easy to make calls just as mobile phone.

### 1.2 Features

1. Built-in 128M bytes memory drive, memory can be updated to 128M bytes.
2. Auto run function under windows 2000 sp4 and XP.
3. Embedded in Softphone with account information.
4. Softphone and account information can be stored to be readable for end user.
5. Un-plug & close automatically without affecting PC system operation.
6. With LCD, keypad and ringer, easy to use like mobile phone.
7. Phone rings for all incoming calls, ring style and volume selectable.
8. Caller ID, echo cancellation, full duplex communication.

### 1.3 System Requirements

1. Windows 2000 sp4 or XP
2. 400MHz processor and free USB1.1 or USB2.0 port
3. 128MB RAM and 15MB free disk space
4. Any broadband connection or minimum 33.6 Kbps dialup

### 1.4 Package Contents

1. One USB Memory phone
2. One user manual

## 2 Using the USB Memory Phone

### 2.1 Keypad Instruction



◀(IN)/▶(OUT): Left Tab /Right Tab:

Press to scroll the Skype tab

▲/▼: Up/Down

Scroll to the contacts.

 : Dial/Answer

Dial out number or Answer a call.

 : Hang up

End talking or refuse incoming call.

**C:** Delete Key

- (1) Press to scroll the Skype window at the idle state
- (2) Delete inputted wrong number while dialing.

### Suppose SkypeMate was embedded in the phone:

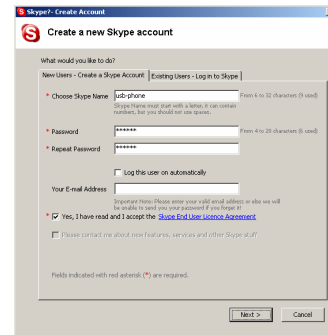
### 2.2 Run Skype

- (1) Download Skype software and install it (www.skype.com).

The version must be 1.0.0.106 or higher.


- (2) Run Skype and log in with skype account.

You can create a Skype account as shown below:



After software startup, the icon will appear to the system tray as shown below:

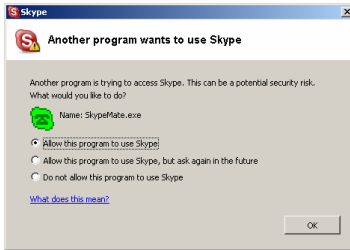


That indicates the Skype are successfully connected to Internet. If the icon is shown as , you have to check your Internet connection.

## 2.3 Connect USB Memory Phone to PC and Run

### SkypeMate

When USB Memory Phone is connected to PC, SkypeMate software which was embedded in the phone will auto-run, then Skype program will pop up the window as shown below:




Select the first option “Allow this program to use Skype”, click “OK” button.


**Note:** If you selected the wrong option, you can make another selection. Please see **2.8. FAQ /problem3** for detail.

After running SkypeMate, the icon will appear to the system tray as shown:



That indicates the device and Skype are connected successfully.

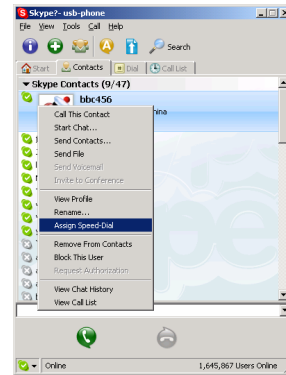
If the icon shown as  (the phone is green and the outside is grey), please run Skype first.

If the icon shown as  (the phone is red and the outside is green), it means USB Memory Phone connected incorrectly. Please reconnect USB Memory Phone to PC.


## 2.4 Call another Skype user

(1) Add "bbc456" to Contacts


(2) Assign Speed-Dial for it, example "11"




(3) Input number and call out:

Press digital "11" on USB Memory Phone, this number will be shown on Skype window, then press  to call out.

## 2.5 Call to regular phone

Press "00"+"country number"+"phone number", then press .

Example: call someone in Beijing, China, please press



00861012345678, and then press .

0086	10	12345678
-----	-----	-----
country code	city code	destination number


**Note:** If you want to use this function, you should buy SkypeOut Credit from [www.skype.com](http://www.skype.com) first.

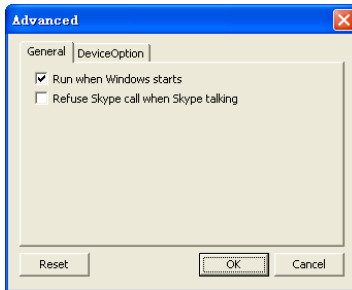
## 2.6 Answer a call

When a call comes in, the USB Memory Phone will ring. Press

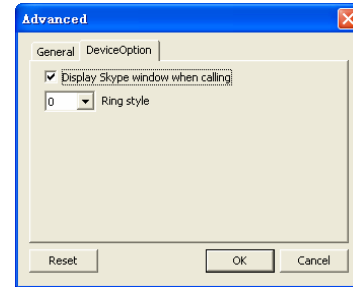
 to answer the call, or press  to refuse the call.

## 2.7 Advanced

- (1) Right click the icon  on the taskbar and select **Advance**
- (2) The window is shown as below:



- (3) **Run when Windows starts:** Select to enable this feature. The SkypeMate will be launched automatically when Windows starts.
- (4) **Refuse Skype call when Skype talking:** Select to enable this feature. The second incoming Skype call will be refused when talking.



- (5) **Display Skype window when calling:** If you cancel this option, when you press the digital keys 0-9, \*, #, the Skype windows will not pop up (except incoming call and outgoing call).
- (6) **Ring style:** They are 10 types of incoming ring (0-9). You can press “##” on USB VoIP Phone to select it when the phone is at ready state. You can select it in “Advanced” windows too.
- (7) Click the button “**OK**” to save the setup.

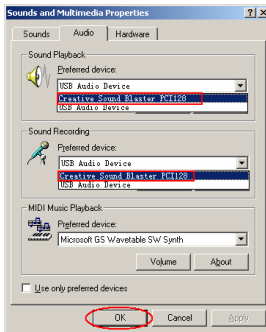
## 2.8 FAQ

### Problem 1

There is no voice comes out when play music?

### Resolution

Please execute the “Control Panel->Sound and Video (🔊)  
->Audio”, set **Sound Playback** and **Sound Recording**'s  
preference device to your sound card, it shown as below:

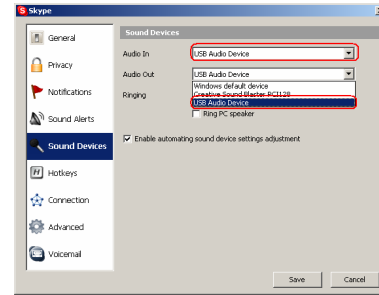


### Problem 2

The voice is played from the PC's sound card instead of the  
USB Memory Phone when I make/answer a call?

### Resolution

Execute “Tools->Options->Sound Devices” to open the  
window as below:



Set “Audio In” and “Audio Out” to “USB Audio Device”.

### Problem 3

Skype has been started, but the icon of SkypeMate still  
shown as 📞 (the phone is green and the outside is grey)?

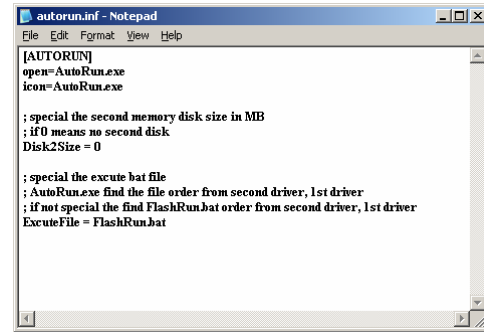
### Resolution

Maybe you have selected the wrong option, you can execute  
“Tools-> Options-> Privacy-> Manage other programs”  
access to Skype”, and then choose the needed option, click  
“Change” button to open the “Manage API Access Control”  
windows, and make another selection.

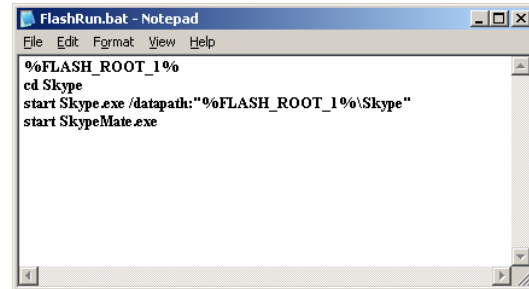
### 3 How to update the software in USB Memory Phone

1. Plug USB Memory Phone into your PC USB port.
2. Double click “**My Computer**” at the desktop, a hard disk named “**Autorun**” will be seen.
3. Install the program which you want to auto-run when the USB Memory Phone is connected to PC.
4. Copy the whole folder of the program to the hard disk. For example, If MSN was installed, please copy the folder **MSN Messenger** to the local disk.
5. In the “**AutoRun**” disk, you will see three files: **AutoRun.exe**, **AutoRun.inf** and **FlashRun.bat**, and a **folder** which include the running programs.
6. **autorun.inf:**

If you want to change the icon display on “My Computer” page, make the “icon=AutoRun.exe” point to the icon you want to use, it can be the “.exe” program or “.ico” file. For example, if the Skype.exe file is in “Skype\Skype.exe”, you can change this sentence to “icon=Skype\Skype.exe”.



#### 7. FlashRun.bat:



The picture above means run the **Skype.exe** and **SkypeMate.exe** programs which in “Skype” folder.

**cd Skype:** Open “Skype” folder

**start Skype.exe /datapath: “%FLASH\_ROOT\_1%\skype”:**

Run Skype program.

**Start SkypeMate.exe:** Run SkypeMate program.

For example: if you want to run the MSN.exe program in

“**MSN\MSN.exe**”, you can change the sentences to:

```
cd MSN
```

```
start MSN.exe
```